

## Development of Catalysts and Ligands for Enantioselective Gold Catalysis

YI-MING WANG, AARON D. LACKNER, AND F. DEAN TOSTE\*  
Department of Chemistry, University of California, Berkeley, California 94720,  
United States

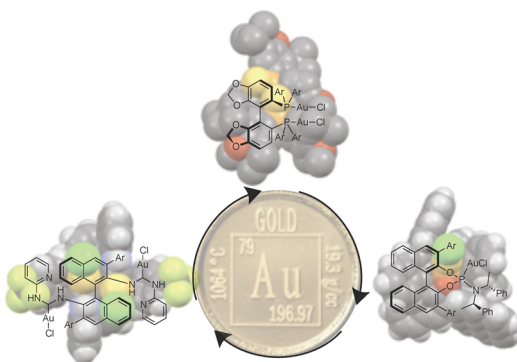
RECEIVED ON AUGUST 2, 2013

### CONSPECTUS

During the past decade, the use of Au(I) complexes for the catalytic activation of C–C  $\pi$ -bonds has been investigated intensely. Over this time period, the development of homogeneous gold catalysis has been extraordinarily rapid and has yielded a host of mild and selective methods for the formation of carbon–carbon and carbon–heteroatom bonds. The facile formation of new bonds facilitated by gold naturally led to efforts toward rendering these transformations enantioselective.

In this Account, we survey the development of catalysts and ligands for enantioselective gold catalysis by our research group as well as related work by others. We also discuss some of our strategies to address the challenges of enantioselective gold(I) catalysis. Early on, our work with enantioselective gold-catalyzed transformations focused on bis(phosphinegold) complexes derived from axially chiral scaffolds. Although these complexes were highly successful in some reactions like cyclopropanation, the careful choice of the weakly coordinating ligand (or counterion) was necessary to obtain high levels of enantioselectivity for the case of allene hydroamination. These counterion effects led us to use the anion itself as a source of chirality, which was successful in the case of allene hydroalkoxylation. In general, these tactics enhance the steric influence around the reactive gold center beyond the two-coordinate ligand environment. The use of binuclear complexes allowed us to use the second gold center and its associated ligand (or counterion) to exert a further steric influence. In a similar vein, we employed a chiral anion (in place of or in addition to a chiral ligand) to move the chiral information closer to the reactive center.

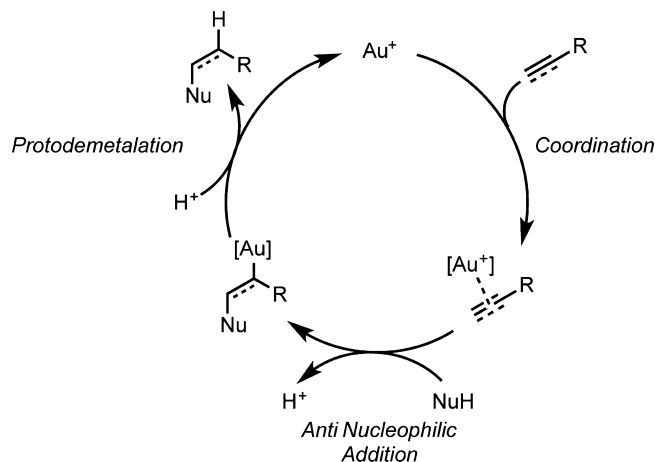
In order to expand the scope of reactions amenable to enantioselective gold catalysis to cycloadditions and other carbocyclization processes, we also developed a new class of mononuclear phosphite and phosphoramidite ligands to supplement the previously widely utilized phosphines. However, we needed to judiciously design the steric environment to create “walls” that enclose the gold center. We also successfully applied these same considerations to the development of binuclear carbene ligands for gold. Finally, we describe the design of bifunctional urea–monophosphine ligands used in a gold-catalyzed three-component coupling.



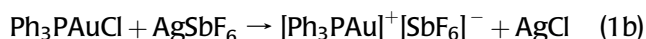
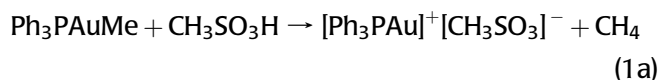
### Introduction

The development of homogeneous gold catalysis in the past decade has been remarkably rapid. As strong yet air- and moisture-tolerant carbophilic Lewis acids, gold complexes have been shown to catalyze transformations involving C–C multiple bonds with unparalleled mildness and selectivity. Although Hg(II) and Tl(III) salts have long been used in the activation of C–C  $\pi$ -bonds, the ability for cationic Au(I) complexes to effect these transformations was poorly recognized. A handful of early reports document the use of Au(III) catalysts for  $\pi$ -activation.<sup>1–3</sup> In 1998, Teles

and co-workers reported the exceptionally high activity of cationic Au(I)–phosphine complexes for alkyne hydroalkoxylation.<sup>4</sup> The cationic Au(I) complexes were generated by protonolysis of the corresponding Au(I)–methyl (eq 1a), although subsequently, it was found that halide abstraction using a silver salt of a noncoordinating anion was a more general approach (eq 1b). Since Teles's initial report, gold-catalyzed alkyne hydrofunctionalization has been extended to a variety of nucleophiles, as well as to alkene and allene substrates. Mechanistically, these reactions are believed to proceed by *anti* attack on a gold-activated C–C

**SCHEME 1.** General Mechanistic Scheme for Gold(I)-Catalyzed Hydrofunctionalization of C–C Multiple Bonds

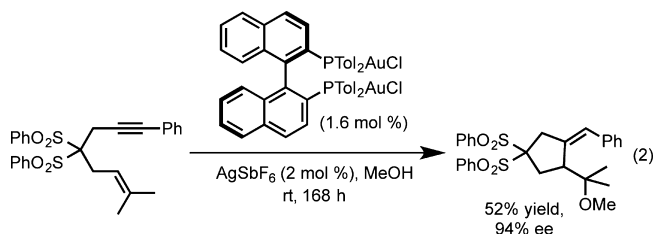
multiple bond (a  $\pi$ -complex), followed by protodemetalation of the resultant  $\sigma$ -complex (Scheme 1).



A second class of reactions, gold-catalyzed skeletal rearrangements, which includes cycloisomerizations, cycloadditions, and other carbocyclization reactions, was reported soon after the initial reports of gold-catalyzed hydrofunctionalization. Earlier, Murai and co-workers observed that  $\pi$ -acidic Pt(II/IV) complexes catalyze rearrangements of enyne substrates.<sup>5</sup> In 2004, Echavarren and co-workers reported the cationic Au(I)-catalyzed cycloisomerization of 1,6-enynes.<sup>6</sup> Conceptually, these carbocyclization reactions are related to the hydrofunctionalization reactions in that initial activation of an alkyne or allene takes place. Attack by a pendant unsaturated C–C bond follows, leading to a diverse array of subsequent rearrangement steps. Later studies have revealed a multitude of pathways for C–C bond formation and the rearrangement steps that follow, with reaction outcome often dependent on properties of the ancillary ligand on gold.<sup>7</sup>

The rapid rise in interest in gold catalysis has been accompanied by efforts to develop enantioselective variants of gold-catalyzed reactions to further increase the synthetic utility of these transformations.<sup>8</sup> The gold-catalyzed Aldol-type reaction between aldehydes and isocyanacetate esters reported by Hayashi, Ito, and Sawamura in 1986 represents the first example of a gold-catalyzed enantioselective reaction.<sup>9</sup> Although this reaction has been well studied, it

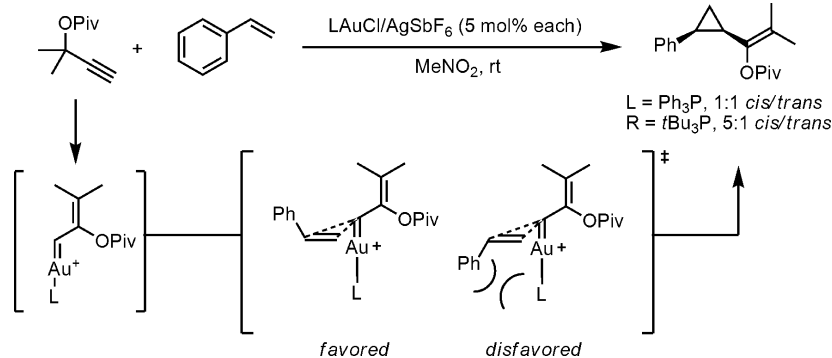
stands apart from more recent developments in the timeline of its development as well as in its activation mode.<sup>10</sup> Shortly after their discovery that cationic gold complexes were highly efficient catalysts for 1,6-enyne alkoxy cyclization, the Echavarren group made the first steps in rendering this reaction enantioselective through the synthesis of chiral bis(phosphine)digold(I) dichlorides as precatalysts. For one substrate, an enantioselectivity of 94% ee was achieved (eq 2), although all others gave under 60% ee.<sup>11</sup>



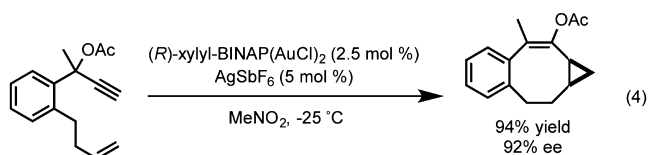
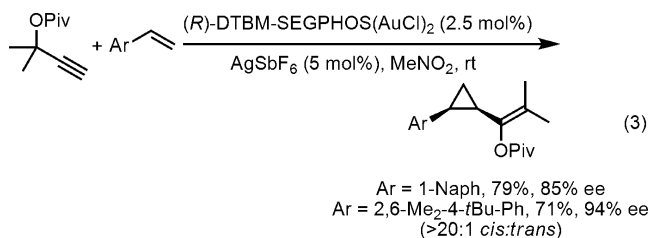
In this Account, we survey the development of catalysts and ligands for enantioselective gold catalysis by the Toste research group, as well as related developments by others. We focus on some of the strategies that our group has developed to address the challenges of enantioselective gold(I) catalysis. In many cases, the use of the bisphosphinedigold(I) complexes proved sufficient in achieving high enantioselectivities. In other cases, other strategies needed to be employed, including tuning the weakly coordinating X-type ligand (or counterion) on gold, use of chiral phosphate counterions, and development of other ligand classes besides the bisphosphines. Generally, these strategies serve to augment steric influence beyond the two-coordinate ligand environment around the reactive gold center. Binuclear complexes allow the second gold center and its associated ligand (or counterion) environment to exert a steric influence. Similarly, the use of a chiral anion (in place of or in addition to a chiral ligand) can potentially move chiral information to closer proximity to the reactive center. Finally, the use of mononuclear complexes is possible, but careful design of the steric environment is often required to create “walls” that enclose the gold center.

### Enantioselective Reactions Catalyzed by Bis(phosphine)digold(I) Complexes Involving Gold(I)–Carbene Intermediates

Our initial investigations into enantioselective gold catalysis focused on the development of an enantioselective variant of the gold-catalyzed Conia-ene reaction.<sup>12</sup> The lack of success in rendering the gold-catalyzed reaction enantioselective led us to (a) develop the enantioselective palladium-catalyzed variant of this reaction<sup>13</sup> and (b) consider other

**SCHEME 2.** Observed Diastereoselectivity and Mechanistic Rationale for Gold(I)-Catalyzed Cyclopropanation

modes of activation for asymmetric gold catalysis that did not involve addition of a prochiral nucleophile to a gold-activated alkyne. To this end, we were inspired by observations made during the course of our investigation of gold-catalyzed alkene cyclopropanation using propargyl esters as carbene precursors.<sup>14</sup> During these studies, we noted that the *cis*–*trans* diastereomeric ratio of the cyclopropanation product depended on the steric properties of the phosphine ligand on gold. The observed selectivity for the *cis* isomer was rationalized by a concerted cyclopropanation model, involving the intermediacy of a cationic gold(I)–carbene intermediate, whose bonding and reactivity have subsequently been investigated by our research group and others (Scheme 2).<sup>15–18</sup> Given the important steric influence exerted on the diastereoselectivity by the ancillary ligand in this model, we reasoned that it might be possible to use the same steric effect to render the reaction enantioselective. After surveying chiral bisphosphine ligands for gold, we found that DTBM–SEGPHOS afforded product with 81% ee and with >20:1 *cis* diastereoselectivity. Several styrene substrates were evaluated giving enantioselectivities ranging from 76% to 94% ee, with the highest enantioselectivities observed for sterically encumbered substrates (eq 3). The enantioselective

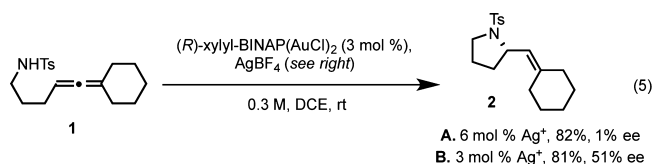


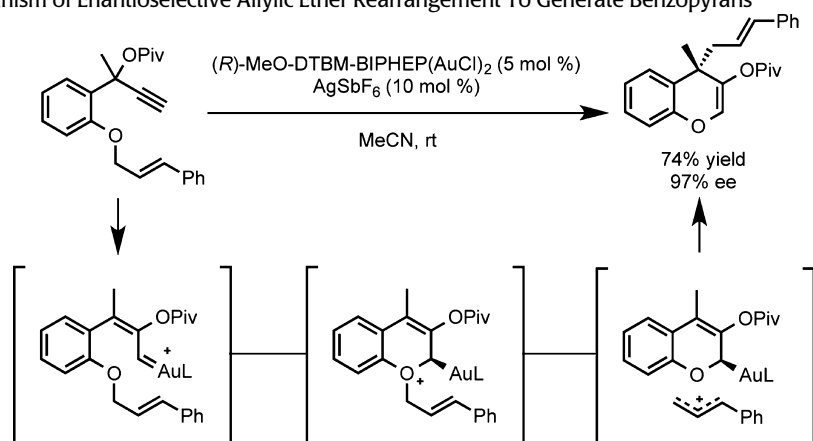
cyclopropanation could be extended in an intramolecular sense to generate cyclopropanated medium-sized rings by using xylyl–BINAP as the bisphosphine ligand (eq 4).<sup>19</sup>

Given our success with enantioselective cyclopropanation intermediates, we considered the reaction of related gold(I)–carbenoid intermediates with nucleophiles other than olefins. To this end, we investigated the reactivity of propargylic ester tethered to allylic ethers. As expected, the allylic ether participated in nucleophilic attack of the highly electrophilic gold(I)–carbene intermediate to generate an alkylgold–oxonium species, which undergoes O-to-C allyl transfer to generate a benzopyran bearing an all carbon quaternary stereocenter with excellent enantiocontrol (Scheme 3).<sup>20</sup>

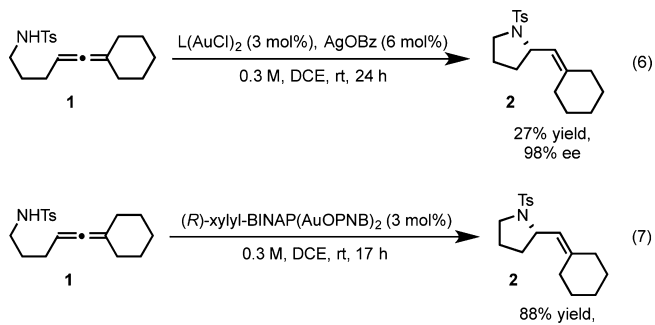
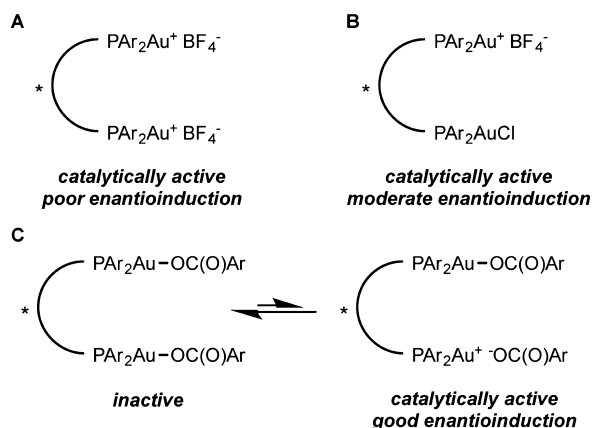
### Enantioselective Hydrofunctionalizations Catalyzed by Bis(phosphine)digold(I) Complexes

Our success in the development of the enantioselective cyclopropanation led us to consider employing similar bisphosphine–gold complexes for asymmetric allene functionalization reactions such as hydroamination.<sup>21</sup> The gold-catalyzed allene hydroamination had previously been reported by the Krause, Yamamoto, and Widenhoefer groups.<sup>22–24</sup> Using a model allene substrate **1**, we initially surveyed conditions analogous to those developed for cyclopropanation (2:1 silver salt activator/bisphosphine–gold precatalyst, eq 5A). Under those conditions, hydroamination to give **2** was observed, but with essentially no enantioselectivity. However, using a 1:1 ratio of silver salt to gold precatalyst (eq 5B) resulted in the formation of product in moderate enantioselectivity.



**SCHEME 3.** Proposed Mechanism of Enantioselective Allylic Ether Rearrangement To Generate Benzopyrans

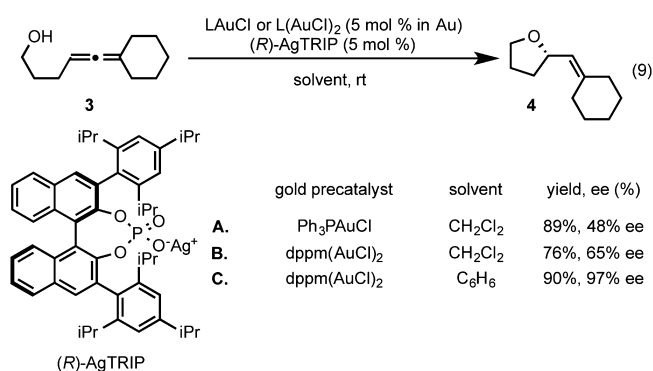
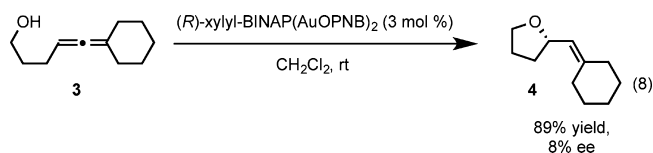
We rationalized these observations by postulating that the monocationic complex in which one of the gold centers remains ligated to chloride catalyzes the hydroamination with moderate enantioselectivity, while the dicationic complex exhibits poor enantioinduction (Scheme 4A,B). We further suspected that the steric properties of this remaining ligand could have a strong impact on enantioselectivity. We investigated bis(phosphine)digold(I) dicarboxylate complexes as potential catalysts, hypothesizing that a catalytically active monocationic species would exist in equilibrium with the inactive coordinatively saturated form and, at the same time, provide a more sterically demanding chiral environment (Scheme 4C). In accord with our hypothesis, the *in situ* generated benzoate complex (*R*)-xylyl-BINAP(AuOBz)<sub>2</sub> catalyzed the hydroamination with a remarkable increase in enantioselectivity, albeit with poor yield even over extended reaction times (eq 6), likely reflecting the low equilibrium concentration of the active monocationic species. Wishing to reduce the basicity (and ligating ability) of the counterion/ligand, we prepared (*R*)-xylyl-BINAP(AuOPNB)<sub>2</sub> as an isolable complex. As we had hoped, this complex exhibited better catalyst activity while maintaining selectivity, providing **2** in excellent yield and enantioselectivity (eq 7).

**SCHEME 4.** The Effect of Counterion/X-type Ligand on Enantioselectivity of Hydroamination

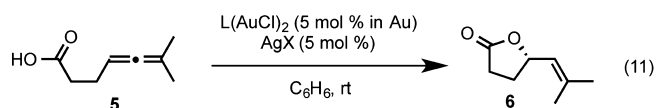
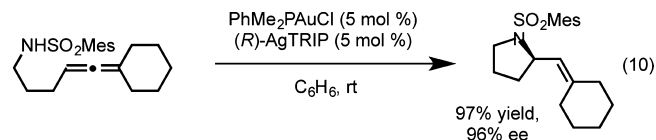
In work conducted independently and reported simultaneously, Widenhoefer and co-workers developed the hydroalkoxylation of allenes.<sup>25</sup> In their report, the counterion on gold was also important, with *p*-toluenesulfonate (OTs) found to be optimal and less coordinating anions giving poor enantioselectivities. Although high enantioselectivities were achieved, bulky *gem*-diphenyl groups on the alkyl chain appeared to be required.

The insights gained from the development of asymmetric allene amination led us to initiate our own studies into hydroalkoxylation. Efforts to apply our earlier reaction conditions to the sterically unconstrained allenol **3** resulted in formation of hydroalkoxylation product with poor enantioselectivity (eq 8). We conjectured that we could overcome the limitations on enantioinduction posed by the linear geometry of gold(I) complexes by moving the source of chirality to an outersphere counterion. We selected the BINOL-derived chiral phosphate anions to test this idea. Encouragingly, the use of [Ph<sub>3</sub>PAu<sup>+</sup>][TRIP<sup>-</sup>], generated *in situ* from halide

abstraction of  $\text{PhMe}_2\text{PAuCl}$  by the silver salt of TRIP phosphoric acid ( $\text{AgTRIP}$ ), resulted in the formation of hydroalkoxylation product in moderate ee (eq 9A). Using the dinuclear achiral catalyst  $\text{dppm}(\text{AuCl})_2$  ( $\text{dppm}$  = bis(diphenylphosphino)methane) and switching to a solvent of low polarity (benzene) to favor the formation of a tighter ion pair ultimately led to conditions that afforded hydroalkoxylation product with exceptional enantiocontrol (eq 9B,C).<sup>26</sup>



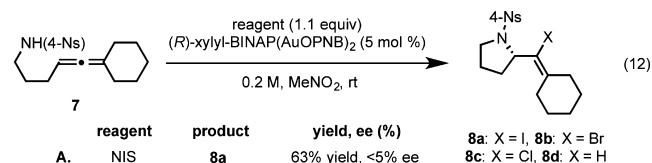
The use of  $\text{PhMe}_2\text{PAuCl}$  as precatalyst instead of  $\text{dppm}(\text{AuCl})_2$  allowed the chiral counterion strategy to be extended to hydroamination (eq 10). Attempts to effect the corresponding hydrocarboxylation of **5** using either chiral bisphosphine ligands or chiral counterions resulted in only low levels of enantioinduction (eq 11A,B). However, the use of a chiral gold complex and chiral phosphate counterion together allowed the chiral information imparted by each to act in concert. A combination of (*S*)-BINAP( $\text{AuCl}$ )<sub>2</sub> and (*R*)-AgTRIP gave hydrocarboxylation product **6** with good enantioselectivity (82% ee, eq 11D). A strong matched–mismatched pairing effect between ligand and counterion was observed, and the mismatched combination (*R*)-BINAP( $\text{AuCl}$ )<sub>2</sub>/*R*)-AgTRIP provided nearly racemic product (eq 11C). The strategies developed for the hydroamination, hydroalkoxylation, and hydrocarboxylation allowed us achieve the enantioselective cyclizations of allenes using other nucleophiles, including hydrazines and both N- and O-terminated hydroxylamines bearing a variety of protecting groups and substitution patterns, to generate enantioenriched pyrazolidines, isoxazolidines, and tetrahydrooxazines.<sup>27</sup>



	L	X	yield, ee (%)
A. Chiral ligand	( <i>R</i> )-BINAP	OPNB	80%, 38% ee ( <i>R</i> )
B. Chiral counterion	dppm	( <i>R</i> )-TRIP	89%, 12% ee ( <i>S</i> )
C. Both (mismatched)	( <i>R</i> )-BINAP	( <i>R</i> )-TRIP	91%, 3% ee ( <i>R</i> )
D. Both (matched)	( <i>S</i> )-BINAP	( <i>R</i> )-TRIP	88%, 82% ee ( <i>S</i> )

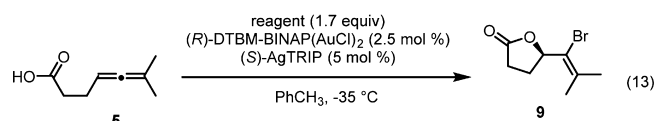
More recently, we sought to extend the synthetic versatility of allene cyclization by achieving catalytic turnover through electrophilic halodemetalation, rather than protodemetalation, to generate haloalkene-substituted heterocyclic products.<sup>28</sup> Though superficially similar to hydrofunctionalization, finding a reagent of suitable reactivity proved challenging. With allene **7** as a model substrate and the previously developed (*R*)-xylyl–BINAP( $\text{AuOPNB}$ )<sub>2</sub> as catalyst, more active reagents like *N*-iodo- or *N*-bromosuccinimide exhibited strong background reactivity and, consequently, provided nearly racemic haloamination products (**8a** and **8b**, respectively, eq 12A,B). On the other hand, reaction with *N*-chlorosuccinimide, which gave the desired chloroamination product **8c** in moderate enantioselectivity (76% ee), suffered from competitive protodemetalation to give hydroamination product **8d** as a side product (eq 12C). Reasoning that the succinimide anion formed upon halogen transfer was insufficiently basic to efficiently sequester the proton equivalent generated, we turned to *N*-haloamides as possible alternatives. Thus, switching to *N*-bromopyrrolidinone (NBL-5) as the halogenating reagent, we observed excellent enantioselectivity for the bromocyclization of **7**, with competitive hydroamination completely suppressed (eq 12D). While application of standard conditions to carboxylic acid **5** delivered racemic lactone **9**, the combination of a chiral ligand and chiral counterion developed earlier afforded halocyclization product with good enantioselectivity and moderate yield (eq 13A). By switching to *N*-bromoazepanone (NBL-7) as the brominating reagent, both yield and enantioselectivity were improved substantially (eq 13B), further illustrating the importance of reagent choice in this transformation.

Upon the successful implementation of enantioselective heteroatom additions to allenes, we investigated the expansion of this reactivity to carbon nucleophiles. We anticipated that a latent carbon nucleophile in the form of a neighboring



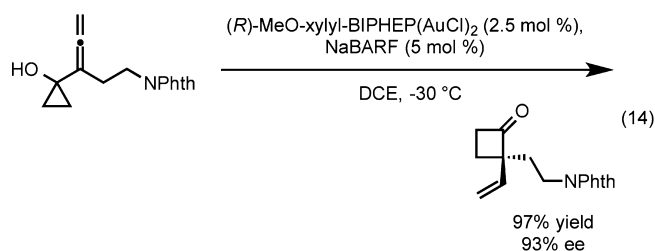
reagent	product	yield, ee (%)	8a: X = I, 8b: X = Br 8c: X = Cl, 8d: X = H
A. NIS	8a	63% yield, <5% ee	
B. NBS	8b	35% yield, <5% ee	
C. NCS	8c (+15% 8d)	57% yield, 76% ee	
D. NBL-5 <sup>a</sup>	8b	88% yield, 99% ee	

<sup>a</sup>NBL-5: *N*-bromopyrrolidinone, 1.5 equiv used.



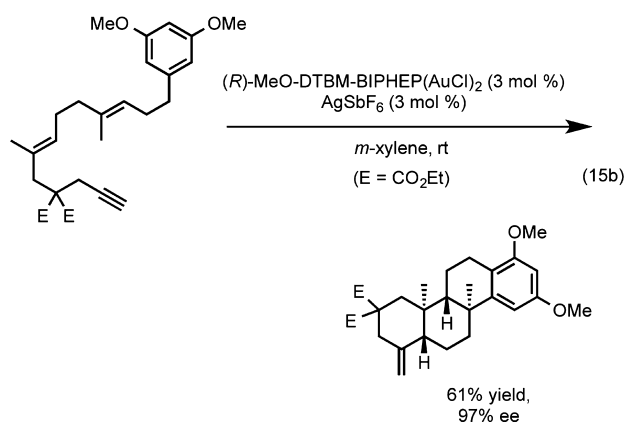
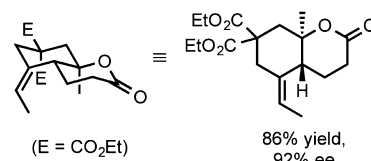
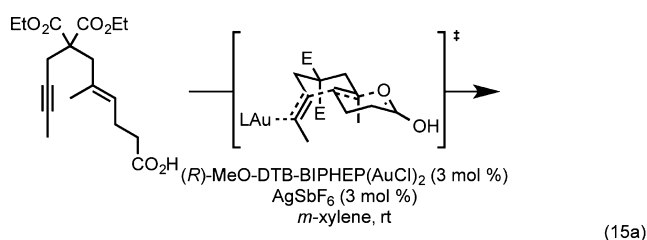
reagent	yield, ee (%)	NBL-5: <i>n</i> = 1 NBL-7: <i>n</i> = 3
A. NBL-5	48% yield, 88% ee	
B. NBL-7	90% yield, 95% ee	

cyclopropanol would undergo ring expansion Meerwein–Wagner shift onto an allene to deliver an enantioenriched vinylcyclobutanone. Indeed, under optimized conditions, a variety of allenylcyclopropanols underwent ring expansion to generate diverse vinylcyclobutanones bearing all carbon quaternary stereocenters with excellent enantioselectivity (eq 14).<sup>29</sup> The use of NaBARF (sodium tetrakis(3,5-trifluoromethylphenyl)borate) to abstract the chloride ligand from the precatalyst led to higher levels of enantioselectivity. Use of more typical halide abstracting reagents such as AgNTf<sub>2</sub> resulted in trace acid formation and, thus, lowered enantioselectivities due to a competitive acid-catalyzed racemic pathway to product formation.



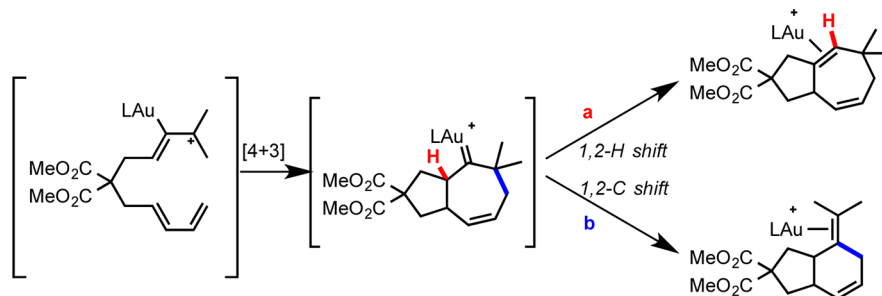
We further speculated that nucleophilic additions onto C–C multiple bonds might be extended to alkene nucleophiles, provided another nucleophile is present to trap the incipient carbocation. In this way, we envisioned a polycyclization process in which gold would selectively initiate cyclization at the alkyne functionality to the exclusion of olefins also present in the substrate. While it was well-known that enynes undergo cycloisomerization reactions in the presence of gold, we posited that polycyclization would be favored over competing reactions due to the availability of a low energy

Stork–Eschenmoser-type transition state that has been proposed for other cationic polycyclizations.<sup>30</sup> Fürstner had previously articulated this possibility while addressing the importance of charge stabilization in gold-catalyzed reactions.<sup>15a</sup> Indeed, the carboxylic acid terminated 1,6-enyne cyclized in the presence of chiral gold catalyst to afford the 6-*exo*-dig dicyclization product as a single diastereomer (eq 15a). Under similar conditions, the reactivity could be extended to a tricyclization to yield the tetracyclic product in excellent enantioselectivity as a single diastereomer (eq 15b).<sup>31</sup> Additionally, we found that the 5-*endo*-dig dicyclization process could be rendered enantioselective using related (bisphosphine)gold catalysts.<sup>32</sup>

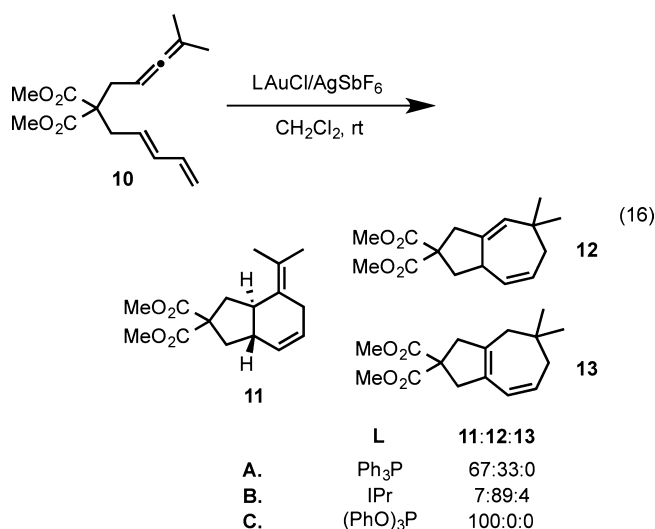


## Development of Chiral Phosphoramidite and Phosphite Ligands for Gold-Catalyzed Cycloadditions

In our earlier studies of the reactivity of allene–dienes in the presence of cationic gold complexes, we observed a product distribution strongly dependent on the ancillary ligand on gold. Subjection of allene–diene **10** to Ph<sub>3</sub>PAuCl/AgSbF<sub>6</sub> resulted in the formation of a mixture

**SCHEME 5.** Proposed Mechanistic Pathways of Allene–Diene Cyclizations, as Supported by DFT Calculations

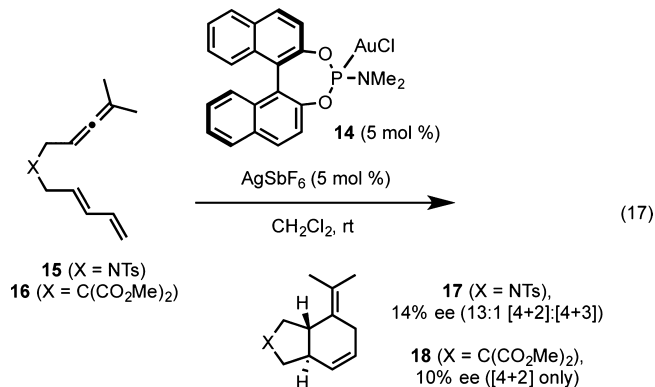
of formal [4 + 2] and [4 + 3] cycloaddition products **11** and **12**.



In contrast, the use of an NHC ligand, IPr (1,3-bis(2,6-diisopropylphenyl)imidazol-2-ylidene) strongly favored the formation of [4 + 3] product **12**, while a phosphite ligand produced the [4 + 2] product **11** exclusively (eq 16).<sup>33</sup> A subsequent density functional study of this system in collaboration with Goddard and co-workers provided insight into the origin of this strong ligand effect.<sup>17</sup> The reaction was predicted to proceed primarily through an initial [4 + 3] cycloaddition pathway. The resultant gold–carbene intermediate could undergo 1,2-hydrogen shift (Scheme 5, path a) or 1,2-alkyl shift (path b) to provide the [4 + 3] and [4 + 2] products, respectively. While the 1,2-alkyl shift was predicted to be relatively insensitive to the nature of the ligand, the computed barrier to 1,2-hydrogen shift was found to be strongly disfavored by phosphite ligands on gold, in agreement with the observed selectivity for the [4 + 2] product.

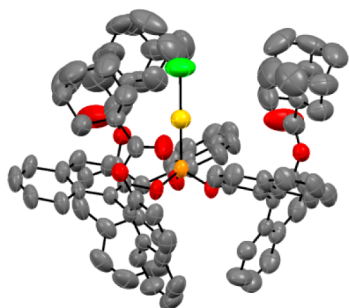
Given the excellent regioselectivity provided by phosphite ligands, we wished to explore chiral variants of these

and electronically similar phosphoramidite ligands to effect the [4 + 2] cycloaddition enantioselectively.<sup>34</sup> Although we<sup>13a</sup> and others<sup>11</sup> had previously reported BINOL-derived mononuclear phosphoramiditegold(I) complexes, reactions catalyzed by these complexes had not exhibited significant enantioselectivity. Because of the two-coordinate linear geometry of gold, we anticipated substantial difficulty in achieving good enantioselectivity with these mononuclear complexes. Indeed, in our initial studies, the previously reported phosphoramidite complex **14** catalyzed the cycloaddition of allene–dienes **15** and **16** with good [4 + 2] selectivity, but poor enantioselectivity (eq 17).

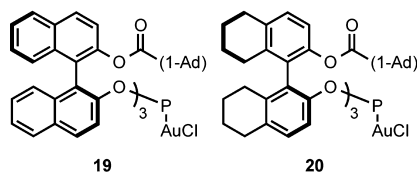
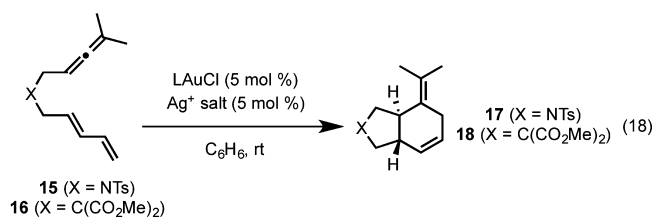


We turned to the C<sub>3</sub>-symmetric phosphite ligands first reported by Reetz and co-workers for Rh-catalyzed hydrogenation as an alternative, reasoning that the outward projecting ester moiety would provide an effective chiral environment for linear Au(I).<sup>35</sup> Indeed, X-ray crystallographic analysis of phosphitegold complex **19** showed the adamantyl ester groups enclosing the gold center (Figure 1).

Complex **19** catalyzed the [4 + 2]-cycloaddition of malonate-tethered substrate **16** to give [4 + 2] cycloadduct **18** with good enantioselectivity (eq 18A). Further optimization using the H<sub>8</sub>-BINOL derived complex **20** furnished **18** with

FIGURE 1. X-ray structure of **19**.

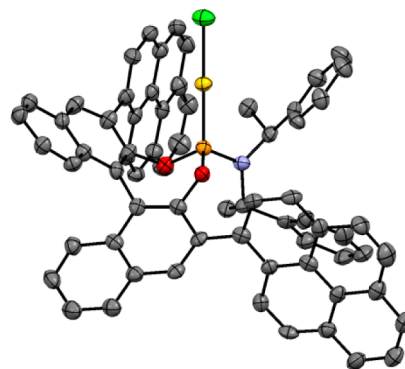
high regio- and enantioselectivity (eq 18C). Unfortunately, these results could not be extended to the more conformationally unconstrained sulfonamide-tethered substrate **15** using phosphite ligands (eq 18D).



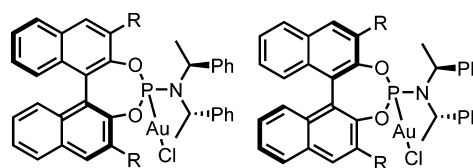
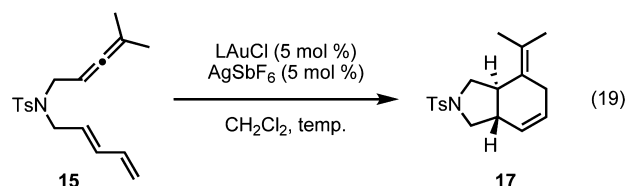
	LAuCl/Ag <sup>+</sup>	substrate	yield and ee
A.	<b>19</b> /AgSbF <sub>6</sub>	<b>16</b>	90%, 74% ee
B.	<b>20</b> /AgSbF <sub>6</sub>	<b>16</b>	92%, n.d. <sup>a</sup>
C.	<b>20</b> /AgBF <sub>4</sub>	<b>16</b>	86%, 92% ee
D.	<b>20</b> /AgSbF <sub>6</sub>	<b>15</b>	84%, 34% ee

<sup>a</sup>Isolated as 7:1 mixture of [4+2], [4+3] products

To address this limitation, we returned to the phosphoramidite ligand system. Examination of the X-ray structure of phosphoramidite complex **14** suggested that we might more effectively enclose the gold center through a combination of substituents on 3 and 3' positions of the binaphthyl and the nitrogen moiety of the phosphoramidite. Furthermore, we anticipated that the modularity of this ligand class would be advantageous toward catalyst optimization. We were encouraged to observe modestly increased enantioselectivity (21% ee vs 14% ee) by switching from **14** to complex **21** prepared from (*S,S*)-bis(1-phenylethyl)amine and (*S*)-BINOL (eq 19B). In contrast, complex **21'** with mismatching amine and binaphthyl chiralities ((*S,S*)-amine and (*R*)-BINOL) furnished racemic product (eq 19C). Upon installation of the bulky 1-pyrenyl substituents on the binaphthyl

FIGURE 2. X-ray structure of **22**.

framework, complex **22** catalyzed the [4 + 2] cycloaddition of sulfonamide **15** with an exceedingly high level of enantiocontrol (eq 19D). The X-ray structure of **22** supported our design principle of enclosing the gold center (Figure 2).



R = H (*S,S,S*): **21**  
R = 1-pyrenyl (*S,S,S*): **22**

R = H (*R,S,S*): **21'**

LAuCl / temp. yield and ee

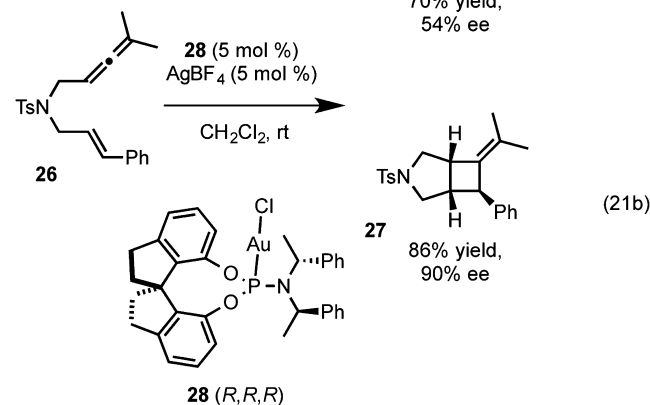
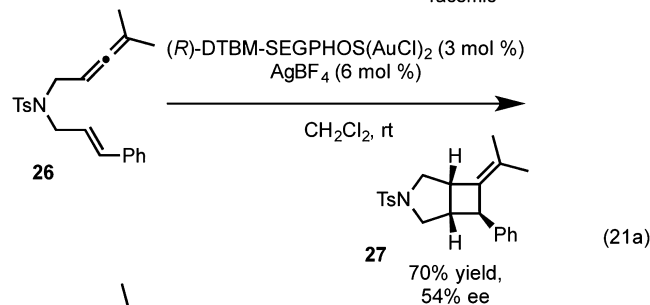
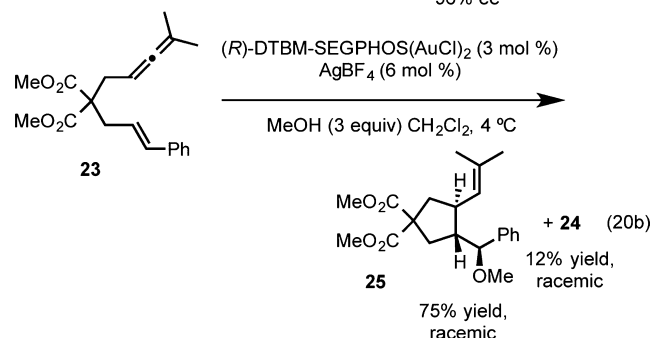
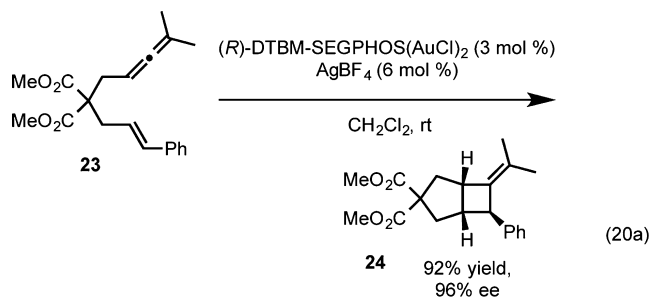
A.	<b>14</b> / rt	88% <sup>a</sup> , 14% ee
B.	<b>21</b> / rt	89%, 21% ee
C.	<b>21'</b> / rt	92%, 0% ee
D.	<b>22</b> / -15 °C	83%, 99% ee

<sup>a</sup>Isolated as 13:1 mixture of [4+2], [4+3] products

The use of phosphoramidite complexes could be extended to the allene-enes, which afford *cis* [2 + 2] cycloaddition product or *trans* cyclization/addition product in the absence and presence of external nucleophile, respectively.<sup>36</sup> While we were able to achieve enantioselectivity with the [2 + 2] cycloaddition using the bisphosphinedigold complexes, high enantioselectivity was limited to malonate tethered allene-enes. Moreover, the cyclization/addition reaction in the presence of nucleophile gave only racemic product under these conditions (eq 20b).<sup>37</sup> A thorough investigation of phosphoramidite structure revealed that a SPINOL (1,1'-spirobiindane-7,7'-diol) derived complex **28**



catalyzed the [2 + 2] cycloaddition of sulfonamide tethered allene–ene **26** with a high level of enantioselectivity (eq 21b).



We next turned to the *trans* cyclization/addition reaction of **26** in the presence of methanol. Although the previously optimal complex **28** produced methoxycyclization product **29** with low enantioselectivity, 3,3'-bis(1-pyrenyl)-substituted **22** developed from the previous study of the [4 + 3] allene–diene cycloaddition provided product in moderate enantioselectivity. Further improvements in enantioselectivity were achieved by switching to the H<sub>8</sub>-BINOL scaffold and increasing the bulk on the 3,3'-binaphthyl substituent.

Computational investigation in collaboration with Goddard and co-workers indicated the importance of the larger biaryl dihedral angle in the H<sub>8</sub>-BINOL substituted catalysts. Thus, after successive rounds of catalyst structure optimization, including the use of an electron deficient pyrenyl substituent for better reactivity, we found that adduct **29** could be obtained in 94% ee using complex **32**. Although the scope of this transformation was limited to nitrogen-tethered allene–enes, the generation of pyrrolidines with three contiguous stereocenters imparts substantial synthetic utility to this reaction. As an illustration, we completed the formal total synthesis of (–)-isocynometrinerine in 86% ee and complete diastereocontrol using a hydroxycyclization as a key transformation (Scheme 6).

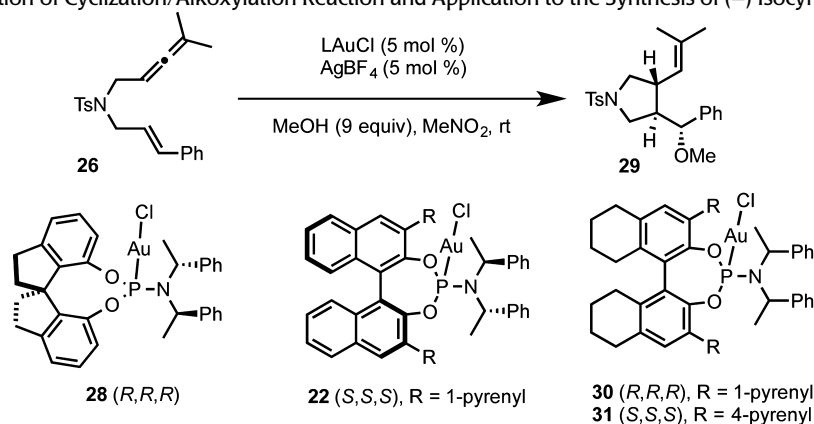
Concurrent with our studies of the phosphite and phosphoramidite ligand systems for gold, the Mascareñas group conducted studies of allene–diene cycloaddition on very similar ligand systems.<sup>38</sup> High enantioselectivity was achieved using a 9-anthracenyl substituted BINOL phosphoramidite ligand. In addition, computational studies performed by the Mascareñas group reached similar conclusions to ours regarding the origin of the strong preference for [4 + 2] cycloaddition using  $\pi$ -acidic ligands.

The Fürstner group has also developed a series of chiral phosphoramidite gold complexes based on a TADDOL-related backbone.<sup>39</sup> In initial studies, Fürstner and co-workers observed good enantioselectivity in the [2 + 2] cycloaddition of allene **23** employing complex **33** as the catalyst. However, by switching from the archetypal isopropylidene acetal group on the TADDOL backbone to acyclic dimethyl ethers, significantly higher enantioselectivities were observed (complexes **34** and **35**, eq 22). The improvement in enantioinduction was attributed to the relief of ring strain on the seven-membered ring, which allows the two axial aryl groups on the TADDOL backbone and axial aryl group on the chiral amine to form a pseudo-3-fold symmetric steric environment around the gold center. Notably, the enantioselective synthesis of clinical candidate GSK 1360707 by gold-catalyzed cycloisomerization was achieved with this catalyst system.<sup>40</sup>

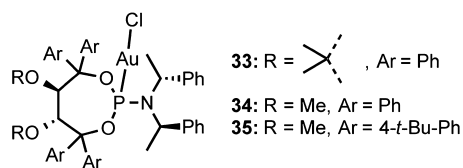
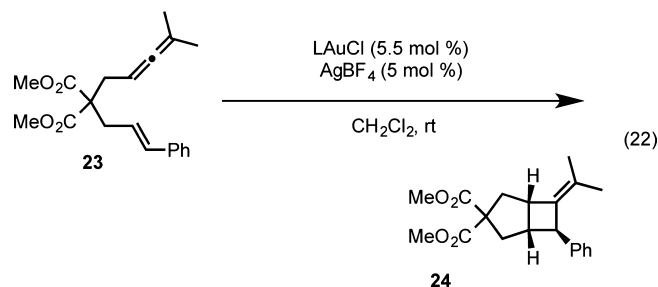
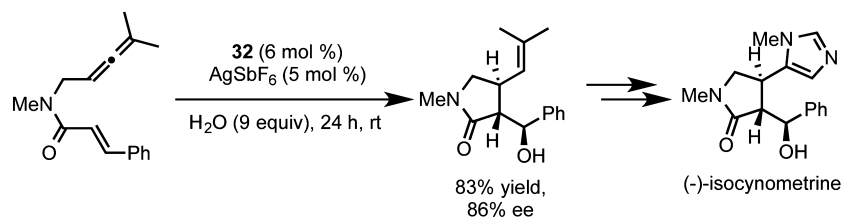
## Development of Chiral Gold–Carbene Complexes

Despite substantial efforts to design chiral carbene ligands for gold, high levels of enantioselectivity have not been observed for NHC–Au(I) complexes. The difficulty of constructing an enclosing steric environment around the gold center is a major challenge, because the NHC substituents tend to project outward rather than around the gold

## SCHEME 6. Optimization of Cyclization/Alkoxylation Reaction and Application to the Synthesis of (–)-Isocynometrine

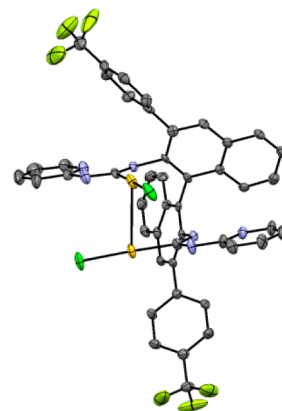


	LAuCl	yield and ee
A.	<b>28</b>	42%, 20% ee (+)
B.	<b>22</b>	80%, 70% ee (-)
C.	<b>30</b>	82%, 82% ee (+)
D.	<b>31</b>	86%, 92% ee (-)
E. <sup>a</sup>	<b>32</b>	95%, 94% ee (-)

<sup>a</sup>At 0 °C

	LAuCl	ee (%)
A.	<b>33</b>	84
B.	<b>34</b>	94
C.	<b>35</b>	>99 <sup>a</sup>

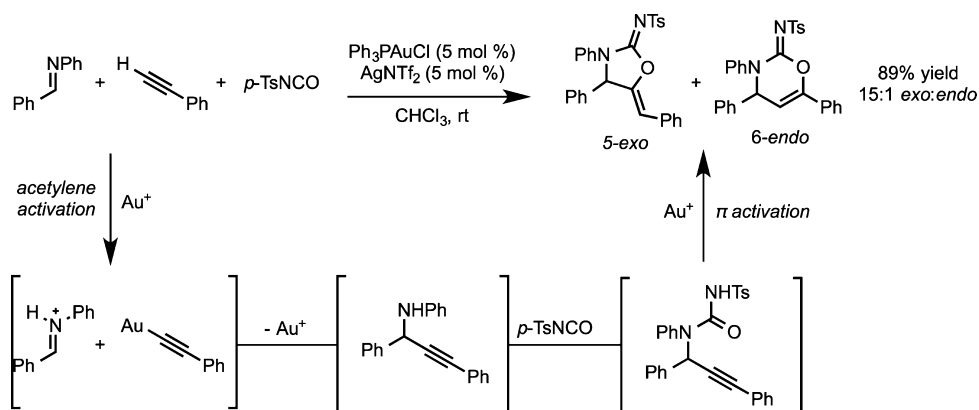
<sup>a</sup>In 91% yield

FIGURE 3. X-ray structure of **36**.

reactivity and selectivity of NHC–Au(I) complexes is ascribed. In our attempts to optimize a gold-catalyzed dynamic kinetic transformation of a phenol-substituted propargyl ester, only moderate reactivity and enantioselectivity could be achieved with bisphosphinedigold catalysts.<sup>41</sup> Since the transformation proceeded through an allene intermediate and computational evidence by Cavallo and co-workers

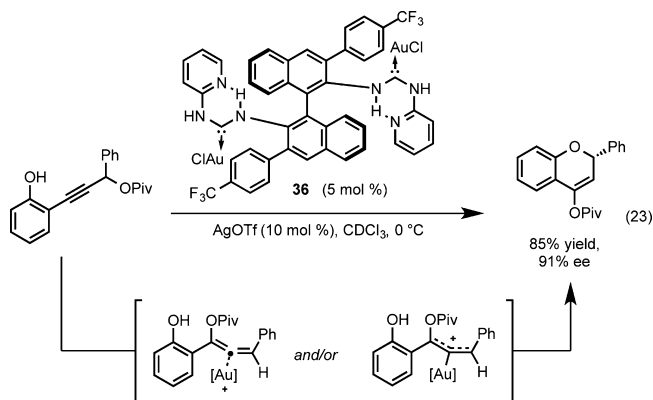
center. The continued development of chiral carbene ligands for gold would be an important goal, given the strong  $\sigma$ -donating capability of these ligands, to which the different

SCHEME 7. Two Activation Modes Required for Three-Component Coupling



suggested that NHC ligands may stabilize Au(I)–allene complexes relative to other potential intermediates in propargyl ester rearrangements,<sup>42</sup> we explored the use of chiral carbene ligands for this transformation.

Although the chiral Au(I)–NHC reported by Tomioka and co-workers<sup>43</sup> was competent in this transformation, the observed enantioselectivity was low. We reasoned that in analogy to bisphosphinedigold(I) complexes, dinuclearity could be used to construct a more enclosed steric environment. We were drawn to the modularly constructed complexes reported by Espinet and co-workers featuring an intramolecular hydrogen bond that locks the conformation of the 2-pyridyl substituent of the carbene framework.<sup>44</sup> We anticipated that as in the case of the phosphoramidite complexes, substitution at the 3,3' position could provide another “wall” around the gold center. This strategy proved effective, with complex **36** bearing a 4-trifluoromethylphenyl substituent allowing for the synthesis of chromenyl pivalates in high enantioselectivity (eq 23). The X-ray structure of **36** was in line with our original suppositions (Figure 3).



Subsequently, Slaughter and co-workers reported a mononuclear carbene–gold complex that catalyzed the enantioselective alkoxyacylation of alkynylbenzaldehydes.

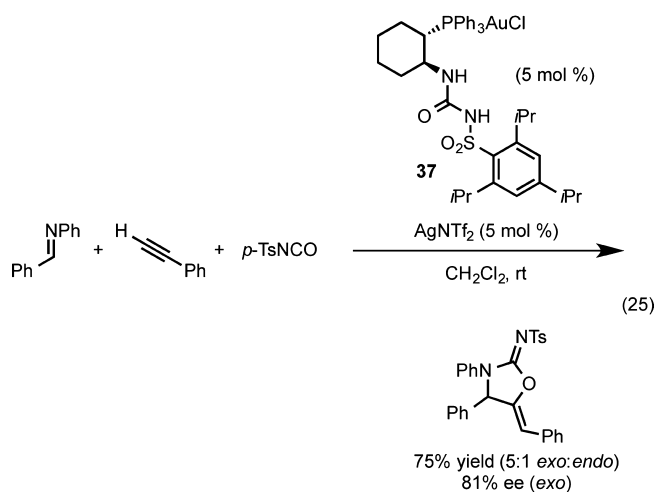
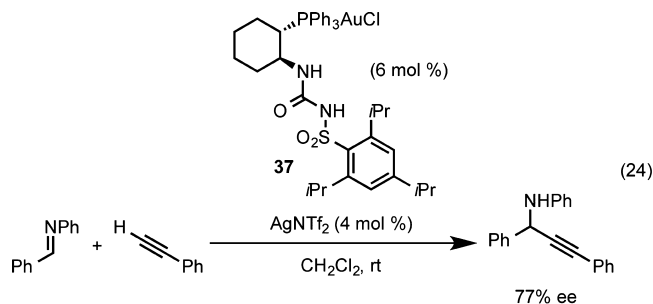
Interestingly, the substituent on the biaryl played a major role in controlling the conformation of the gold complex, with computational and crystallographic studies indicating a gold–arene interaction that is accentuated in the case of electron-poor aryl groups.<sup>45</sup> More recently, the Mascareñas group has reported axially chiral triazoloisquinolinylidene ligands for gold, which were highly active and selective catalysts for the formal [4 + 2] cycloadditions of allenamides and dienes.<sup>46</sup>

## Development of Bifunctional Monophosphine Ligands for Three-Component Coupling Reaction

Our group was interested in the development of reactions in which the gold catalyst operates in multiple distinct modes of activation. After significant efforts in reaction development, a three-component coupling was realized in which a terminal alkyne, an aldimine, and a tosylisocyanate are combined to form cyclic carbamimidates in the presence of cationic phosphinegold complexes. The transformation is hypothesized to proceed through gold acetylide formation, subsequent addition into iminium, acetylation of the formed amine, and 5-*exo*-dig cyclization of the carbamimidate onto the gold-activated internal alkyne (Scheme 7).

Previous strategies for the development of an enantioselective variant (use of bisphosphine ligands, monodentate phosphoramidite ligands, or chiral counterions) proved ineffective, with bulky ligands leading to lower product yields and regioselectivity. As an alternative, the use of small chiral bifunctional ligands that may induce asymmetry based on attractive interactions<sup>47</sup> rather than steric repulsion was explored. We postulated that a phosphine ligand containing a hydrogen bond accepting moiety could help order the transition state by bringing the active iminium intermediate

into proximity with the phosphine-bound gold acetylide. Extensive screening led to the identification of the tosylurea-containing complex **37** as a competent catalyst for the enantioselective addition of terminal alkynes into aldimines (eq 24). A slight modification of the protocol proved suitable for the three-component coupling (eq 25).<sup>48</sup>



## Summary and Outlook

Our studies in enantioselective catalysis using cationic gold complexes have been intimately related to our development of the reactivity of gold complexes in general. Our observation of ligand effects on the diastereoselectivity and regioselectivity of gold-catalyzed reactions led to insights on the mechanism of these reactions, which provided guidance for finding suitable conditions for obtaining high enantioselectivities. While bisphosphinegold(I) complexes have proven to be relatively general and versatile for many classes of gold-catalyzed reactions, understanding the role of the counterion or weakly coordinating ligand was required for the successful development of these reactions. The use of weakly coordinating chiral counterions as sole or auxiliary sources of chirality developed logically from these insights.

More generally, we recognized that additional enantiocontrol elements were often required to mitigate the linear geometry of gold complexes, which could place the center of reactivity

far away from the chirality source. The use of dinuclearity along with carboxylate ligands or chiral anions constituted one approach. In the case of phosphite, phosphoramidite, and carbene ligands, the idea of building a “wall” around gold proved to be a more general strategy. Although great strides have been made, many challenges persist in the development of enantioselective gold catalysis. Notably, carbocyclization reactions continue to pose challenges with respect to cyclization mode as well as enantioselectivity. In many cases, enantioselective versions remain limited in scope. Intermolecular reactivity has seen slower development in gold catalysis, and enantioselective variants are especially rare. Finally, effective enantioselective catalysis that relies on the higher oxidations of gold (Au(II) or Au(III)) has yet to be realized.

We are gratefully acknowledge the NIGMS (Grant R01 GM073932) for funding this work. We thank Takasago International Corporation (SEGPPOS ligands), Solvias (BIPHEP ligands), and Johnson Matthey (AuCl<sub>3</sub>) for their generous donations. We are greatly indebted to our co-workers; without their creativity, insights and efforts, the work highlighted in this Account would not have been possible.

## BIOGRAPHICAL INFORMATION

**Yi-Ming Wang** was born in Shanghai, China, and grew up in Boulder, Colorado. He graduated with an A.B./A.M. degree in chemistry/physics and mathematics from Harvard University in 2008 after conducting research in the group of Prof. Andrew Myers. He did his graduate studies under the supervision of Prof. F. Dean Toste at the University of California, Berkeley, and obtained his Ph.D. in 2013. He is currently pursuing postdoctoral studies in the laboratory of Prof. Stephen Buchwald at the Massachusetts Institute of Technology.

**Aaron D. Lackner** received a B.A. degree in chemistry from Carleton College in Northfield, Minnesota, in 2006. After two years working in Merck Research Laboratories in Rahway, New Jersey, he carried out doctoral research under the supervision of Prof. F. Dean Toste at the University of California, Berkeley. He obtained his Ph.D. in 2013. He is currently a postdoctoral fellow in the laboratory of Prof. Alois Fürstner at the Max-Planck-Institut für Kohlenforschung in Mülheim, Germany.

**F. Dean Toste** was born in Terceira, Azores, Portugal, but soon moved to Toronto, Canada. He obtained a B.Sc. and M.Sc. from the University of Toronto and his Ph.D. from Stanford University in 2000 from Professor Barry M. Trost. Following postdoctoral research at the California Institute of Technology in the laboratory of Professor Robert H. Grubbs, he joined the faculty at the University of California, Berkeley, in 2002. His research interests are in catalysis, in particular homogeneous catalysis and its application to chemical synthesis.

## FOOTNOTES

\*Corresponding author. E-mail: fdtoste@berkeley.edu.  
The authors declare no competing financial interest.

## REFERENCES

- Norman, R. O. C.; Parr, W. J. E.; Thomas, C. B. Gold(III) as an Electrophilic Oxidant of Alkenes. *J. Chem. Soc., Perkin Trans. 1* **1976**, 811–817.
- Norman, R. O. C.; Parr, W. J. E.; Thomas, C. B. The Reactions of Alkynes, Cyclopropanes, and Benzene Derivatives with Gold(III). *J. Chem. Soc., Perkin Trans. 1* **1976**, 1983–1987.
- Fukuda, Y.; Utiyama, K. Effective Transformation of Unactivated Alkynes into Ketones or Acetals with a Gold(III) Catalyst. *J. Org. Chem.* **1991**, *56*, 3729–3731.
- Teles, J. H.; Brode, S.; Chabanas, M. Cationic Gold(I) Complexes: Highly Efficient Catalysts for the Additions of Alcohols to Alkynes. *Angew. Chem., Int. Ed.* **1998**, *37*, 1415–1418.
- Chatani, N.; Furukawa, N.; Sakurai, H.; Murai, S. PtCl<sub>2</sub>-Catalyzed Conversion of 1,6- and 1,7-Enynes to 1-Vinylcycloalkenes. Anomalous Bond Connection in Skeletal Reorganization of Enynes. *Organometallics* **1996**, *15*, 901–903.
- Nieto-Oberhuber, C.; Muñoz, M. P.; Buñuel, E.; Nevado, C.; Cárdenas, D. J.; Echavarren, A. M. Cationic Gold(I) Complexes: Highly Alkynophilic Catalysts for the exo- and endo-Cyclization of Enynes. *Angew. Chem., Int. Ed.* **2004**, *43*, 2402–2406.
- Jiménez-Núñez, E.; Echavarren, A. M. Molecular Diversity through Gold Catalysis with Alkynes. *Chem. Commun.* **2007**, 333–346.
- Reviews on enantioselective gold catalysis: (a) Pradal, A.; Touleec, P. Y.; Michelet, V. Recent Developments in Asymmetric Catalysis in the Presence of Chiral gold complexes. *Synthesis* **2011**, 1501–1514. (b) Sengupta, S.; Shi, X. Recent Advances in Asymmetric Gold Catalysis. *ChemCatChem* **2010**, *2*, 609–619.
- Ito, Y.; Sawamura, M.; Hayashi, T. Catalytic Asymmetric Aldol Reaction: Reaction of Aldehydes with Isocyanacetate Catalyzed by a Chiral Ferrocenylphosphine-Gold(I) Complex. *J. Am. Chem. Soc.* **1986**, *108*, 6405–6406.
- For related use of gold(I) complexes as  $\sigma$ -acid (rather than  $\pi$ -acid) catalysts, see: (a) Melhado, A. D.; Amarante, G. W.; Wang, Z. J.; Luparia, M.; Toste, F. D. Gold(I)-Catalyzed Diastereo- and Enantioselective 1,3-Dipolar Cycloaddition and Mannich Reactions of Azlactones. *J. Am. Chem. Soc.* **2011**, *133*, 3517–3527. For use of gold(I) complexes for Lewis acid activation of Brønsted acids, see: (b) Cheon, C. H.; Kanno, O.; Toste, F. D. Chiral Brønsted Acid from a Cationic Gold(I) Complex: Catalytic Enantioselective Protonation of Silyl Enol Ethers of Ketones. *J. Am. Chem. Soc.* **2011**, *133*, 13248–13252.
- Muñoz, M. P.; Adrio, J.; Carretero, J. C.; Echavarren, A. M. Ligand Effects in Gold- and Platinum-Catalyzed Cyclization of Enynes: Chiral Gold Complexes for Enantioselective Alkoxylation. *Organometallics* **2005**, *24*, 1293–1300.
- Kennedy-Smith, J. J.; Staben, S. T.; Toste, F. D. Gold(I)-Catalyzed Conia-Ene Reaction of  $\beta$ -Ketoesters with Alkynes. *J. Am. Chem. Soc.* **2004**, *126*, 4526–4527.
- (a) Corkey, B. K.; Toste, F. D. Catalytic Enantioselective Conia-Ene Reaction. *J. Am. Chem. Soc.* **2005**, *127*, 17168–17169. (b) Corkey, B. K.; Toste, F. D. Palladium-Catalyzed Enantioselective Cyclization of Silyloxy-1,6-Enynes. *J. Am. Chem. Soc.* **2007**, *129*, 2764–2765. (c) Corkey, B. K.; Heller, S. T.; Wang, Y.-M.; Toste, F. D. *Tetrahedron* **2013**, *69*, 5640–5646.
- Johansson, M. J.; Gorin, D. J.; Staben, S. T.; Toste, F. D. Gold(I)-Catalyzed Stereoselective Olefin Cyclopropanation. *J. Am. Chem. Soc.* **2005**, *127*, 17616–17617.
- (a) Fürstner, A.; Morency, L. On the Nature of the Reactive Intermediates in Gold-Catalyzed Cycloisomerization Reactions. *Angew. Chem., Int. Ed.* **2008**, *47*, 5030–5033. (b) Seidel, G.; Mynott, R.; Fürstner, A. Elementary Steps of Gold Catalysis: NMR Spectroscopy Reveals the Highly Cationic Character of a “Gold Carbenoid”. *Angew. Chem., Int. Ed.* **2009**, *48*, 2510–2513.
- Benitez, D.; Shapiro, N. D.; Tkatchouk, E.; Wang, Y.; Goddard, W. A.; Toste, F. D. A Bonding Model for Gold(I) Carbene Complexes. *Nat. Chem.* **2009**, *1*, 482–486.
- Benitez, D.; Tkatchouk, E.; Gonzalez, A. Z.; Goddard, W. A.; Toste, F. D. On the Impact of Steric and Electronic Properties of Ligands on Gold(I)-Catalyzed Cycloaddition Reaction. *Org. Lett.* **2009**, *11*, 4798–4801.
- López-Carrillo, V.; Huguet, N.; Mosquera, Á.; Echavarren, A. M. Nature of the Intermediates in Gold(I)-Catalyzed Cyclizations of 1,6-Enynes. *Chem.—Eur. J.* **2011**, *17*, 10972–10978.
- Watson, I. D. G.; Ritter, S.; Toste, F. D. Asymmetric Synthesis of Medium-Sized Rings by Intramolecular Au(I)-Catalyzed Cyclopropanation. *J. Am. Chem. Soc.* **2009**, *131*, 2056–2057.
- Uemura, M.; Watson, I. D. G.; Katsukawa, M.; Toste, F. D. Gold(I)-Catalyzed Enantioselective Synthesis of Benzopyrans via Rearrangement of Allylic Oxonium Intermediates. *J. Am. Chem. Soc.* **2009**, *131*, 3464–3465.
- Lalonde, R. L.; Sherry, B. D.; Kang, E. J.; Toste, F. D. Gold(I)-Catalyzed Enantioselective Intramolecular Hydroamination of Alkenes. *J. Am. Chem. Soc.* **2007**, *129*, 2452–2453.
- Morita, N.; Krause, N. Gold Catalysis in Organic Synthesis: Efficient Cycloisomerization of  $\alpha$ -Aminoallenes to 3-Pyrrolines. *Org. Lett.* **2004**, *6*, 4121–4123.
- Nishina, N.; Yamamoto, Y. Gold-Catalyzed Intermolecular Hydroamination of Alkenes with Arylamines and Resulting High Chirality Transfer. *Angew. Chem., Int. Ed.* **2006**, *45*, 3314–3317.
- Zhang, Z.; Liu, C.; Kinder, R. E.; Han, X.; Qian, H.; Widenhoefer, R. A. Highly Active Au(I) Catalyst for the Intramolecular exo-Hydrofunctionalization of Alkenes with Carbon, Nitrogen, and Oxygen Nucleophiles. *J. Am. Chem. Soc.* **2006**, *128*, 9066–9073.
- Zhang, Z.; Widenhoefer, R. A. Gold(I)-Catalyzed Intramolecular Enantioselective Hydroalkylation of Alkenes. *Angew. Chem., Int. Ed.* **2007**, *46*, 283–285.
- Hamilton, G. L.; Kang, E. J.; Mba, M.; Toste, F. D. A Powerful Chiral Counterion Strategy for Asymmetric Transition Metal Catalysis. *Science* **2007**, *317*, 496–499.
- Lalonde, R.; Wang, Z. J.; Mba, M.; Lackner, A. D.; Toste, F. D. Gold(I)-Catalyzed Enantioselective Synthesis of Pyrazolidines, Isoxazolidines, and Tetrahydrooxazines. *Angew. Chem., Int. Ed.* **2010**, *49*, 598–601.
- Miles, D. H.; Veguillas, M.; Toste, F. D. Gold(I)-Catalyzed Enantioselective Bromocyclization Reactions of Alkenes. *Chem. Sci.* **2013**, *4*, 3427–3431.
- Kleinbeck, F.; Toste, F. D. Gold(I)-Catalyzed Enantioselective Ring Expansion of Allenylcyclopropanols. *J. Am. Chem. Soc.* **2009**, *131*, 9178–9179.
- (a) Stork, G.; Burgstahler, A. W. The Stereochemistry of Polyene Cyclization. *J. Am. Chem. Soc.* **1955**, *77*, 5068–5077. (b) Eschenmayer, A.; Ruzicka, L.; Jeger, O.; Arigoni, D. Zur Kenntnis der Triterpene. 190. Mitteilung. Eine stereochemische Interpretation der biogenetischen Isoprenregel bei den Triterpenen. *Helv. Chim. Acta* **1955**, *38*, 1890–1904.
- Sethofer, S. G.; Mayer, T.; Toste, F. D. Gold(I)-Catalyzed Enantioselective Polycyclization Reactions. *J. Am. Chem. Soc.* **2010**, *132*, 8276–8277.
- Brazeau, J. F.; Zhang, S.; Colomer, I.; Corkey, B. K.; Toste, F. D. Enantioselective Cyclization of Silyloxyenynes Catalyzed by Cationic Metal Phosphine Complexes. *J. Am. Chem. Soc.* **2012**, *134*, 2742–2749.
- Mauleón, P.; Zeldin, R. M.; González, A. Z.; Toste, F. D. Ligand-Controlled Access to [4 + 2] and [4 + 3] Cycloadditions in Gold-Catalyzed Reactions of Allene-Dienes. *J. Am. Chem. Soc.* **2009**, *131*, 6348–6349.
- González, A. Z.; Toste, F. D. Gold(I)-Catalyzed Enantioselective [4 + 2]-Cycloaddition of Allene-Dienes. *Org. Lett.* **2010**, *12*, 200–203.
- Reetz, M. T.; Guo, H.; Ma, J.-A.; Goddard, R.; Mynott, R. J. Helical Triskelion Monophosphites as Ligands in Asymmetric Catalysis. *J. Am. Chem. Soc.* **2009**, *131*, 4136–4142.
- González, A. Z.; Benitez, D.; Tkatchouk, E.; Goddard, W. A.; Toste, F. D. Phosphoramidite Gold(I)-Catalyzed Diastereo- and Enantioselective Synthesis of 3,4-Substituted Pyrrolidines. *J. Am. Chem. Soc.* **2011**, *133*, 5500–5507.
- Luzung, M. R.; Mauleón, P.; Toste, F. D. Gold(I)-Catalyzed [2 + 2]-Cycloaddition of Allenes. *J. Am. Chem. Soc.* **2007**, *129*, 12402–12403.
- Alonso, I.; Trillo, B.; López, F.; Montserrat, S.; Ujacque, G.; Castedo, L.; Lledós, A.; Mascareñas, J. L. Gold-Catalyzed [4C+2C] Cycloadditions of Allenedienes, including an Enantioselective Version with New Phosphoramidite-Based Catalysts: Mechanistic Aspects of the Divergence between [4C+3C] and [4C+2C] Pathways. *J. Am. Chem. Soc.* **2009**, *131*, 13020–13030.
- Teller, H.; Corbet, M.; Mantilli, L.; Gopakumar, G.; Goddard, R.; Thiel, W.; Fürstner, A. One-Point Binding Ligands for Asymmetric Gold Catalysis: Phosphoramidites with a TADDOL-Related but Acyclic Backbone. *J. Am. Chem. Soc.* **2012**, *134*, 15331–15342.
- Teller, H.; Fürstner, A. Concise Synthesis of the Antidepressive Drug Candidate GSK1360707 by a Highly Enantioselective Gold-Catalyzed Enyne Cycloisomerization Reaction. *Chem.—Eur. J.* **2011**, *17*, 7764–7767.
- Wang, Y.-M.; Kuzniewski, C. N.; Rauniyar, V.; Hoong, C.; Toste, F. D. Chiral (Acyclic Diaminocarbene)Gold(I)-Catalyzed Dynamic Kinetic Asymmetric Transformation of Propargyl Esters. *J. Am. Chem. Soc.* **2011**, *133*, 12972–12975.
- Correa, A.; Marion, N.; Fensterbank, L.; Malacria, M.; Nolan, S. P.; Cavallo, L. Golden Carousel in Catalysis: The Cationic Gold/Propargyl Ester Cycle. *Angew. Chem., Int. Ed.* **2008**, *47*, 718–721.
- Matsumoto, Y.; Selim, K. B.; Nakanishi, H.; Yamada, K.; Yamamoto, Y.; Tomioka, K. Chiral Carbene Approach to Gold-Catalyzed Asymmetric Cyclization of 1,6-Enynes. *Tetrahedron Lett.* **2010**, *51*, 404–406.
- Bartolomé, C.; García-Cuadrado, D.; Ramiro, Z.; Espinet, P. Synthesis and Catalytic Activity of Gold Chiral Nitrogen Acyclic Carbenes and Gold Hydrogen Bonded Heterocyclic Carbenes in Cyclopropanation of Vinyl Arenes and in Intramolecular Hydroalkoxylation of Alkenes. *Inorg. Chem.* **2010**, *49*, 9758–9764.
- Handa, S.; Slaughter, L. M. Enantioselective Alkynylbenzaldehyde Cyclizations Catalyzed by Gold(I) Acyclic Diaminocarbene Complexes Containing Weak Au-Arene Interactions. *Angew. Chem., Int. Ed.* **2012**, *51*, 2912–2915.
- Franco, J.; Grande-Carmona, F.; Faustino, H.; Iglesia-Sigüenza, J.; Diez, E.; Alonso, I.; Fernández, R.; Lassaletta, J. M.; López, F.; Mascareñas, J. L. Axially Chiral Triazoloquinolin-3-ylidene Ligands in Gold(I)-Catalyzed Asymmetric Intermolecular (4 + 2) Cycloadditions of Allenamides and Dienes. *J. Am. Chem. Soc.* **2012**, *134*, 14322–14325.
- (a) Knowles, R. R.; Jacobsen, E. N. Attractive Noncovalent Interactions in Asymmetric Catalysis: Links between Enzymes and Small Molecule Catalysts. *Proc. Natl. Acad. Sci. U.S.A.* **2010**, *107*, 20678–20685. For a recent example of multipoint binding in enantioselective gold catalysis, see: (b) Bandini, M.; Bottoni, A.; Chiarucci, M.; Cera, G.; Miscione, G. P. *J. Am. Chem. Soc.* **2012**, *134*, 20690–20700 and references therein.
- Campbell, M. J.; Toste, F. D. Enantioselective Synthesis of Cyclic Carbamimidates via a Three-component Reaction of Imines, Terminal Alkynes, and p-Toluenesulfonylisocyanate Using a Monophosphine Gold(I) Catalyst. *Chem. Sci.* **2011**, *2*, 1369–1378.